

Abridged Genetic Engineering Pathway

(Original “A” Sequence)

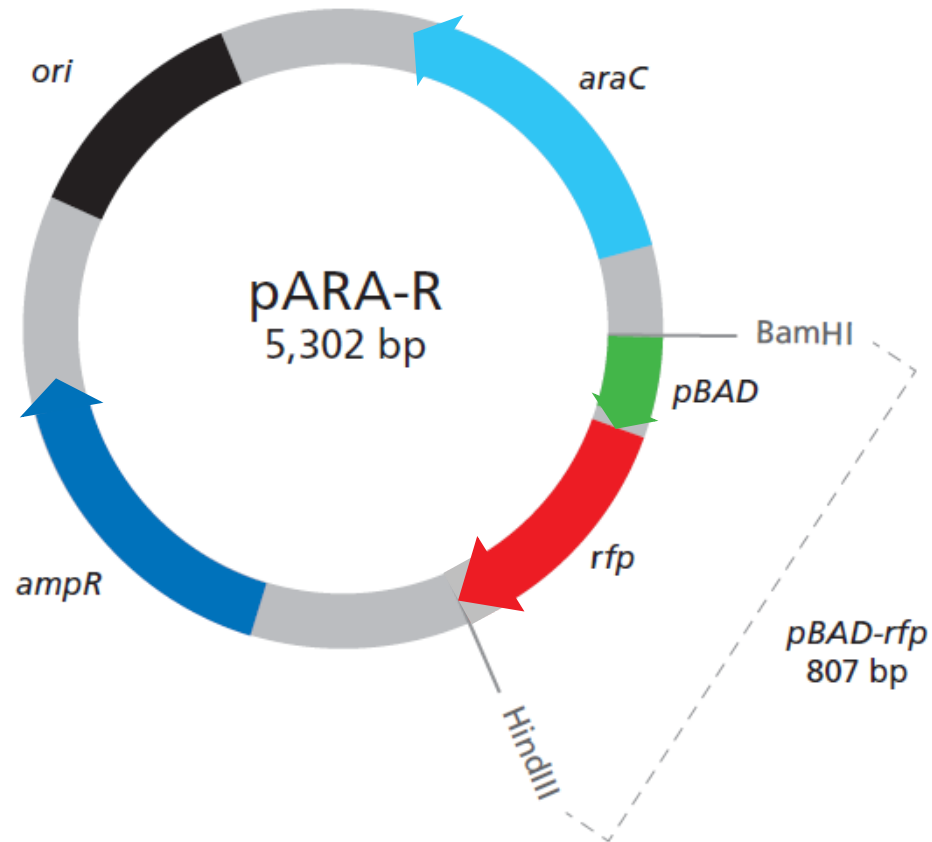
Teacher Guide

Amgen Biotech Experience

Scientific Discovery for the Classroom

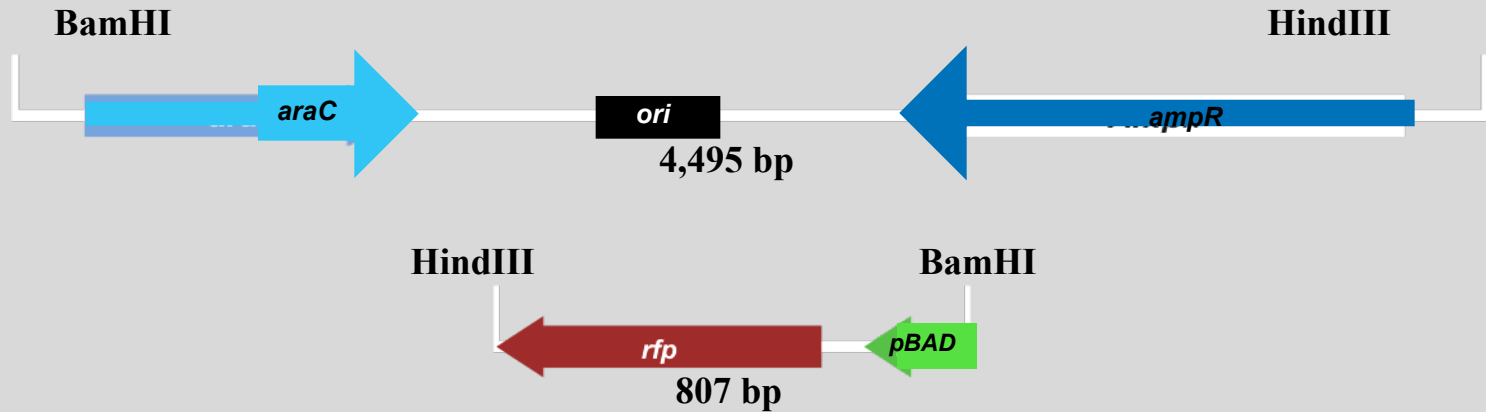


Recombinant Plasmid pARA-R



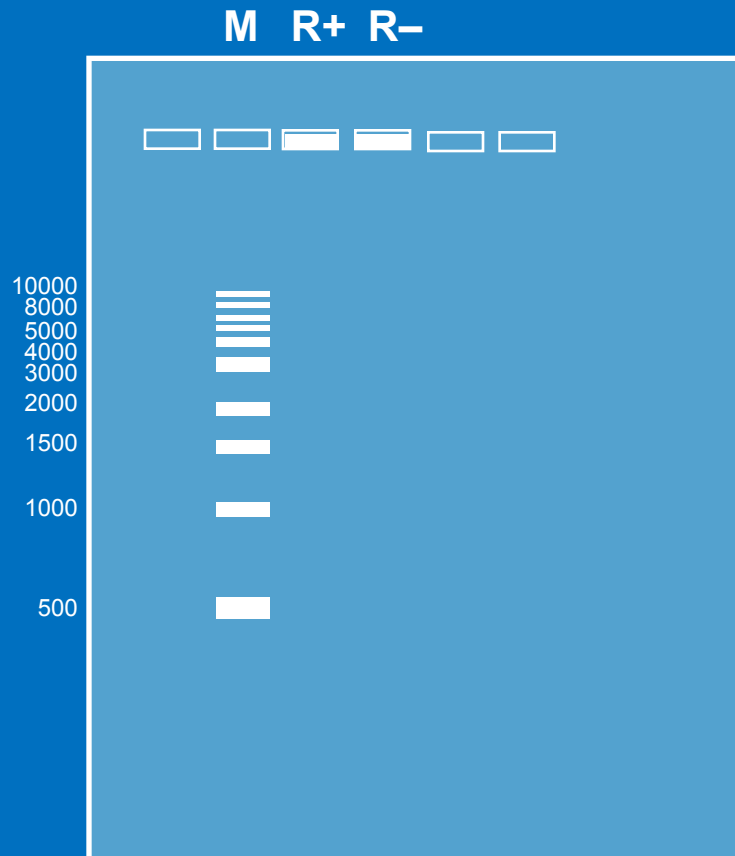
Restriction Analysis of pARA-R

Restriction fragments after digest with **HindIII** and **BamHI**

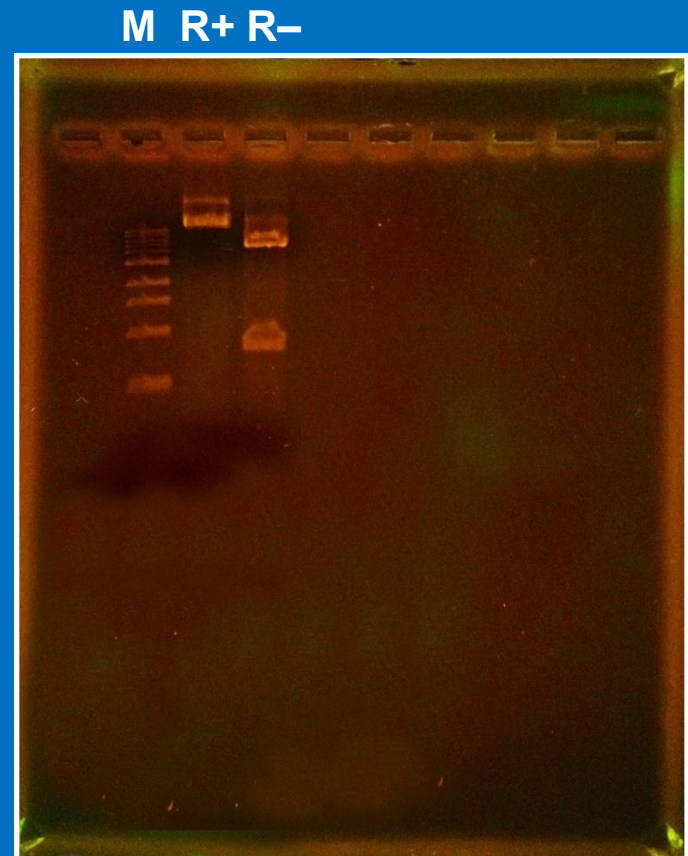


Confirmation of Restriction

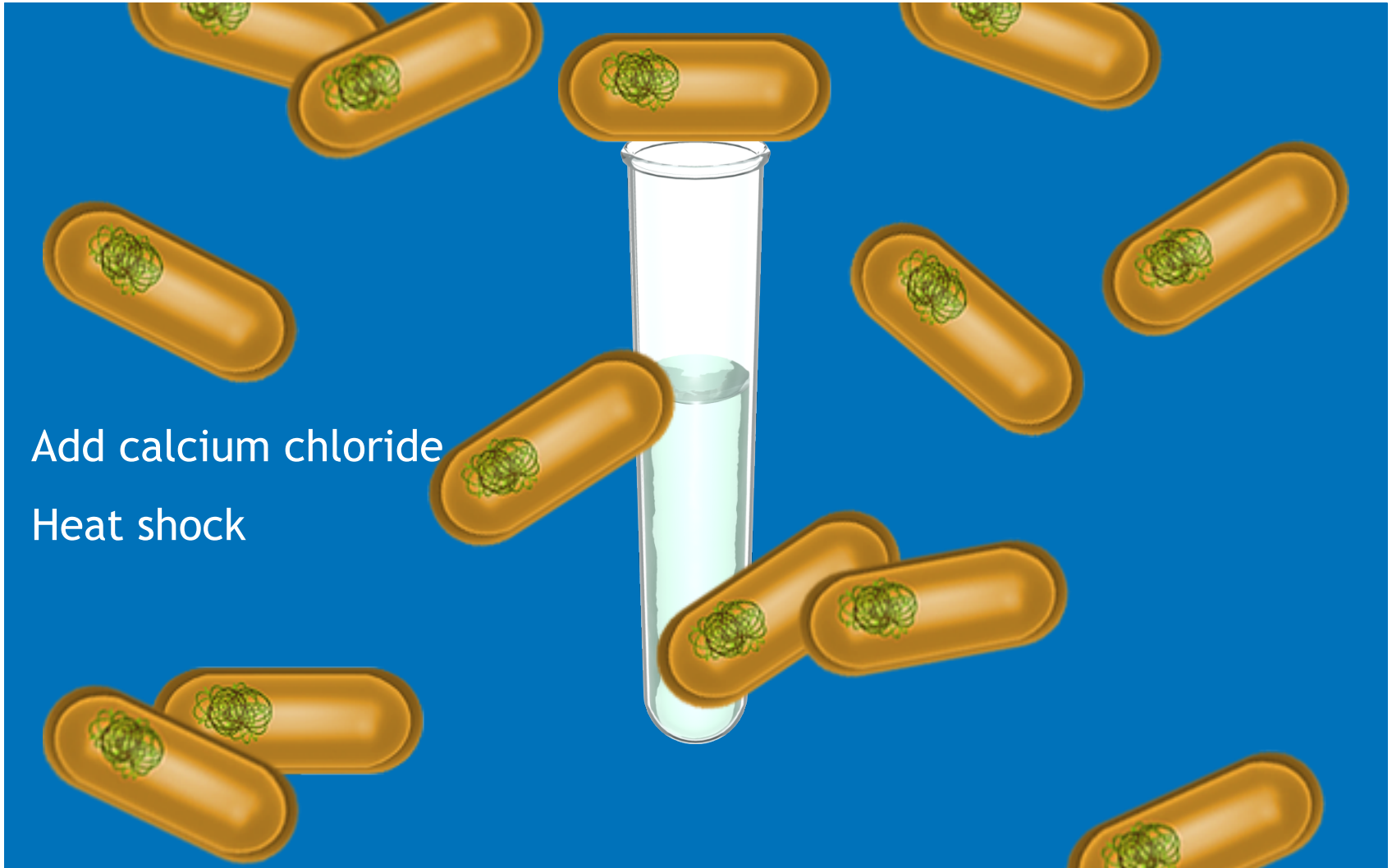
Prediction for restriction gel



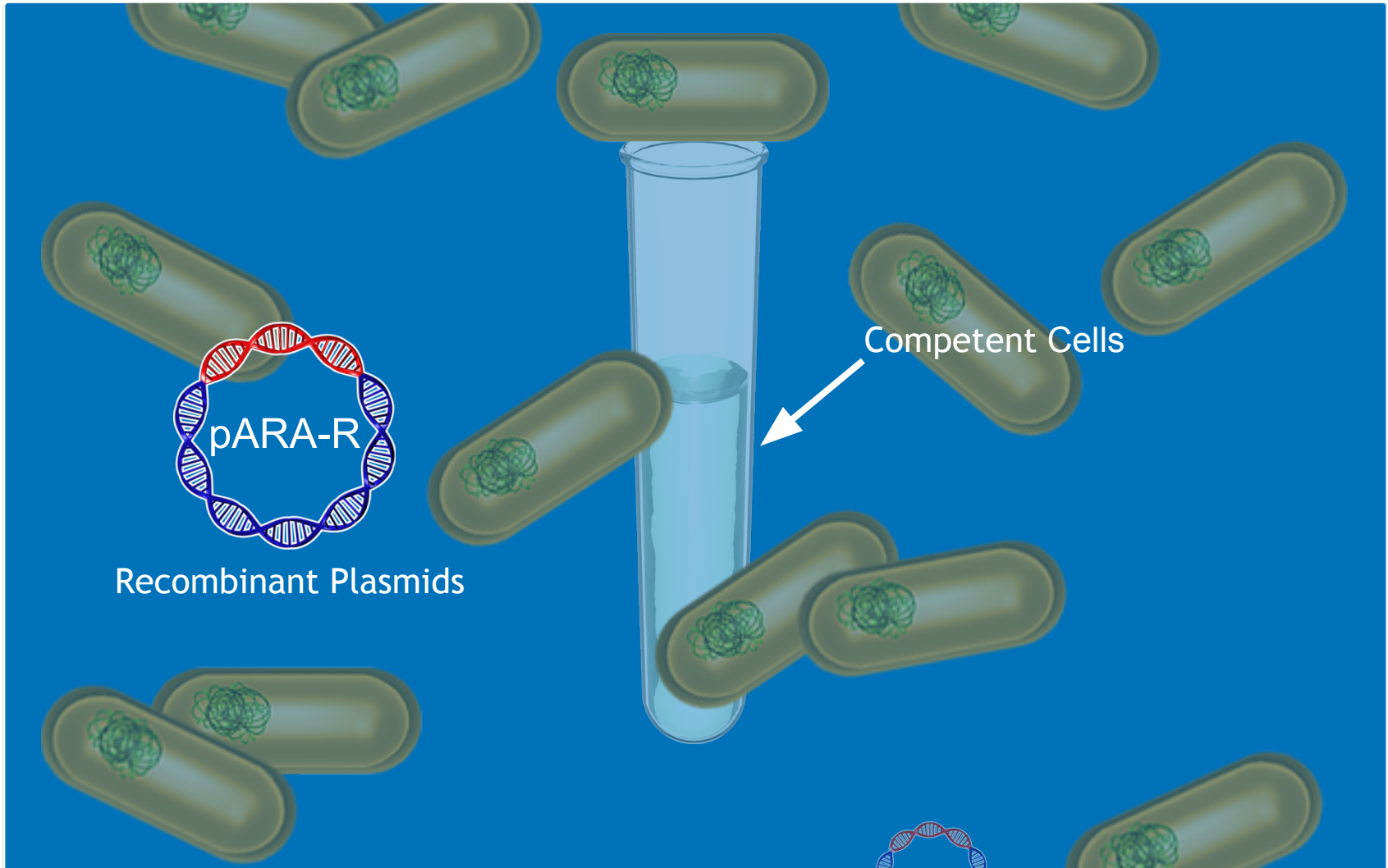
Results for restriction gel



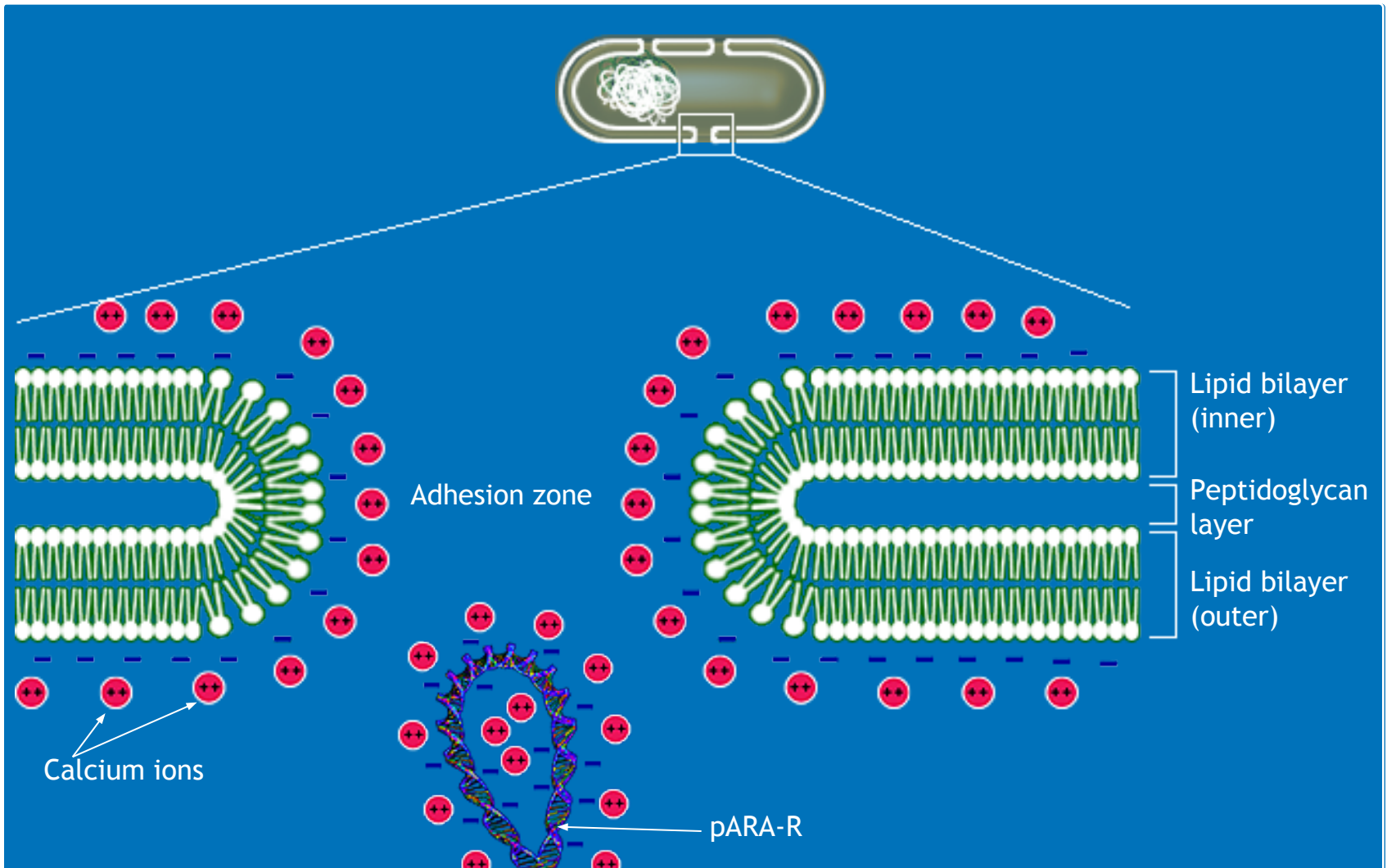
Preparation of Competent Cells



Transformation of *E. coli* with pARA-R

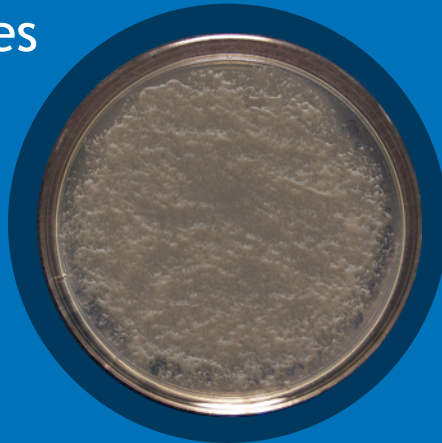


Transformation of *E. coli* with pARA-R

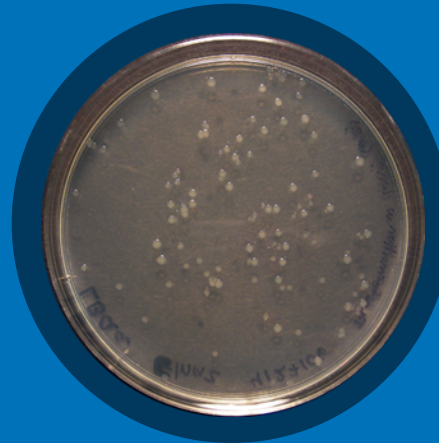


Growth and Selection of Transformed Bacteria

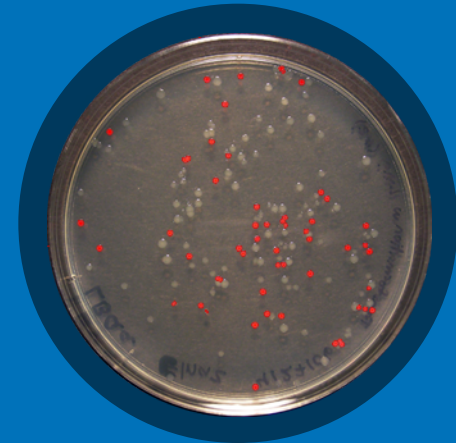
P+ plates



LB

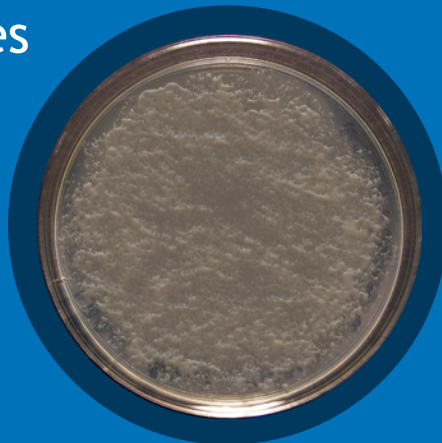


LB/amp



LB/amp/ara

P- plates



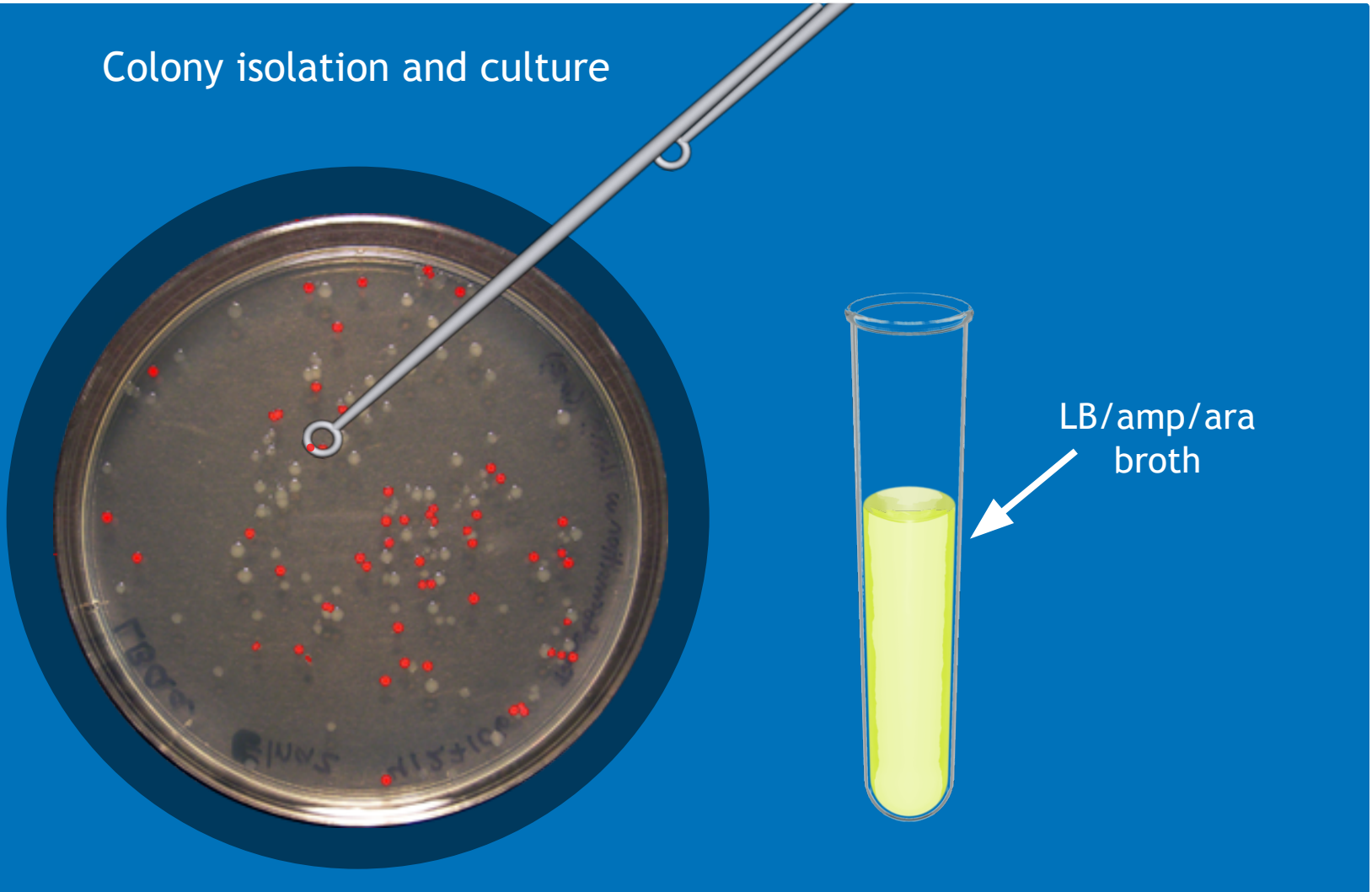
LB



LB/amp

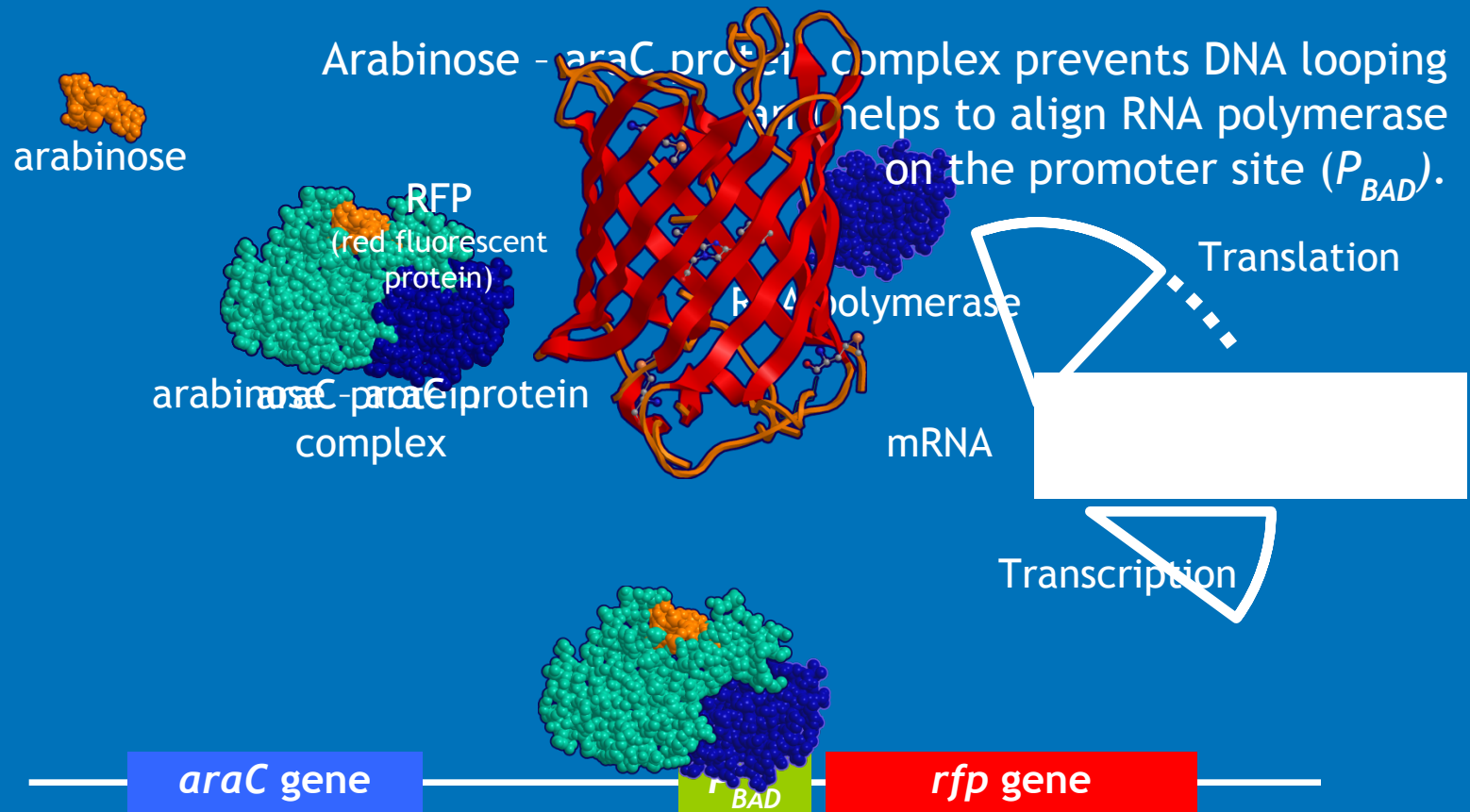
Overnight Culture of *E. coli* for *rfp* Expression

Colony isolation and culture

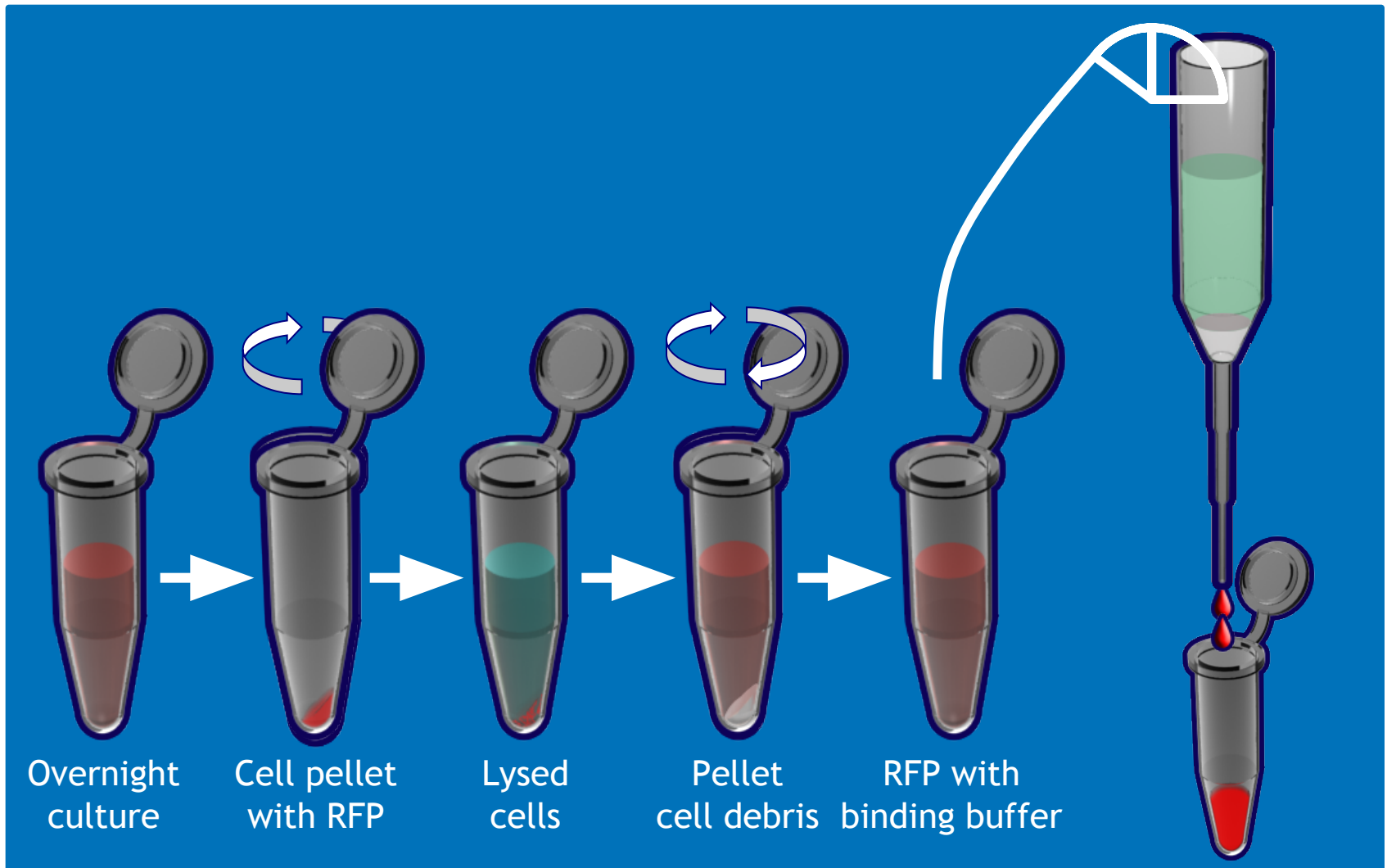


LB/amp/ara
broth

RFP Production



RFP Purification



Three-dimensional Shape of RFP

